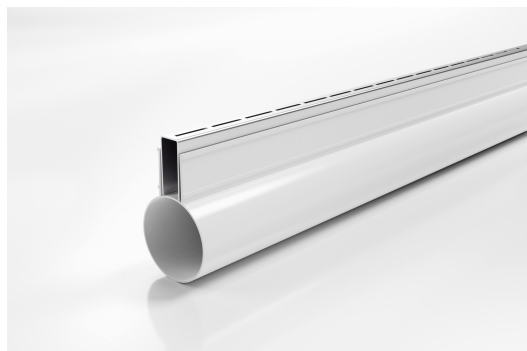




SDiPS

Slot Drain



Code SDiPS
Range Slot Drain
Grate Style PS
Category Components
Steel Grade 316

Grates longer than 1500mm supplied in sections. Tile Inserts longer than 1200mm supplied in sections. Channels over 3000mm supplied in sections with joiner. +/-2mm tolerance on dimensions.

This is a Punched Slot Stainless Steel Grate component to fit the Slot Drain SD90

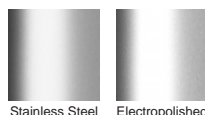
This is the newest addition to the original Slot Drain.

Please be aware that depending on the installation environment, for a pool installation or close to a surf beach, you may need to have your stainless steel grates electropolished.

SPECIFICATIONS + DIMENSIONS

Channel Width	30mm
Channel Depth	Adjustable
Length(s)	1000mm 1500mm
Outlet Size	N/A

STORMTECH COLOUR FINISHES



Electroplate finishes subject to natural variation with time and local environment. Factors such as pools/surf beaches may require electropolishing. Contact us for suitability.

PRODUCT APPLICATIONS

Balcony Drainage	Special Needs Drainage
Commercial Drainage	
Courtyard / Patio Drainage	
Driveway Drainage	
Pool and Spa Area Drainage	
Paved Area Drainage	

Copyright © Stormtech Pty Ltd. Patent 733361. Drawings not to scale, please use dimensions shown.
Downloaded 03/08/2025 (please check for updates)



Visit **stormtech.com.au**
for tools + inspiration.

Phone **1300 653 403**

Email **info@stormtech.com.au**