

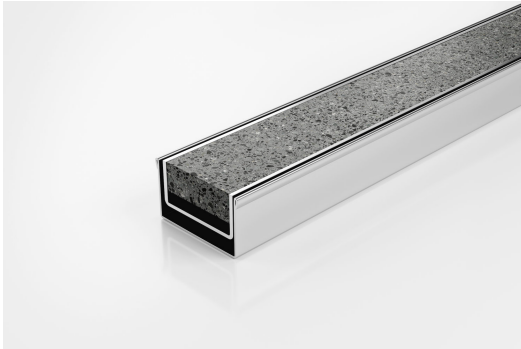


ARCHITECTURAL
GRATES + DRAINS



65Tii40

Tile Insert Drain



The 65Tii40 is a modular drainage system with a stainless steel Tile Insert drain and stainless steel channel.

The 65Ti is a premium Tile Insert manufactured from 316 marine grade stainless steel.

The 65Tii40 is suitable for a tile up to 20mm thick.

Lengths over 3000mm available on request.

Code 65Tii40

Range 65

Grate Style Ti

Category Modular Kits

Channel Material Stainless Steel

Steel Grade 316

Refer to AS3500 for outlet pipe sizes specific to your installation.

SPECIFICATIONS + DIMENSIONS

Channel Width	72mm
Channel Depth	42mm
Length(s)	1000mm 1200mm 2000mm
Outlet Size	DN50

STORMTECH COLOUR FINISHES



Stainless Steel



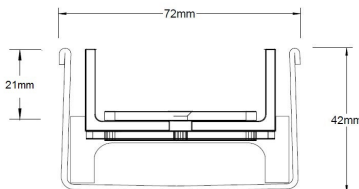
Electropolished

Electroplate finishes subject to natural variation with time and local environment. Factors such as pools/surf beaches may require electropolishing. Contact us for suitability.

PRODUCT APPLICATIONS

Bathroom Drainage
Balcony Drainage
Commercial Drainage
Courtyard / Patio Drainage
Pool and Spa Area Drainage
Hospitality Drainage

Paved Area Drainage
Shower Drainage
Multi-Residential Drainage
Special Needs Drainage
Threshold Drainage
Suspended Slab Drainage



Grates longer than 1500mm supplied in sections. Tile Inserts longer than 1200mm supplied in sections. Channels over 3000mm supplied in sections with joiner. +/-2mm tolerance on dimensions.

Copyright © Stormtech Pty Ltd. Patent 733361. Drawings not to scale, please use dimensions shown.
Downloaded 03/08/2025 (please check for updates)



Visit **stormtech.com.au**
for tools + inspiration.

Phone **1300 653 403**

Email **info@stormtech.com.au**