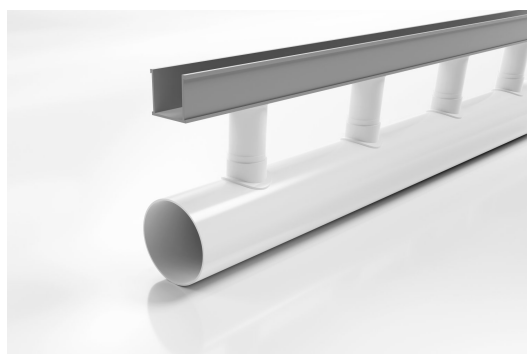




38G90

Special Assembly



The Special Assembly range was developed for outdoor applications with high capacity drainage needs.

The 38G90 provides flexibility in landscape and pool design featuring a 38mm wide top drainage channel connected via downpipes at 200mm intervals to a 90mm drain pipe below.

38mm wide channel and 90mm drain pipe assembly Length: 3000mm

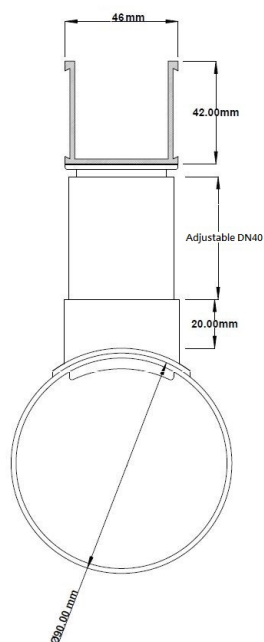
Please note stainless steel grates to complement this system are separate items

Code 38G90

Range Special Assembly

Category Modular Kits

Channel Material uPVC



Grates longer than 1500mm supplied in sections. Tile Inserts longer than 1200mm supplied in sections. Channels over 3000mm supplied in sections with joiner. +/-2mm tolerance on dimensions.



SPECIFICATIONS + DIMENSIONS

Channel Width	46mm
Channel Depth	42mm
Length(s)	3000mm
Outlet Size	N/A

PRODUCT APPLICATIONS

Balcony Drainage
Commercial Drainage
Courtyard / Patio Drainage
Driveway Drainage
Pool and Spa Area Drainage

Copyright © Stormtech Pty Ltd. Patent 733361. Drawings not to scale, please use dimensions shown.
Downloaded 03/08/2025 (please check for updates)